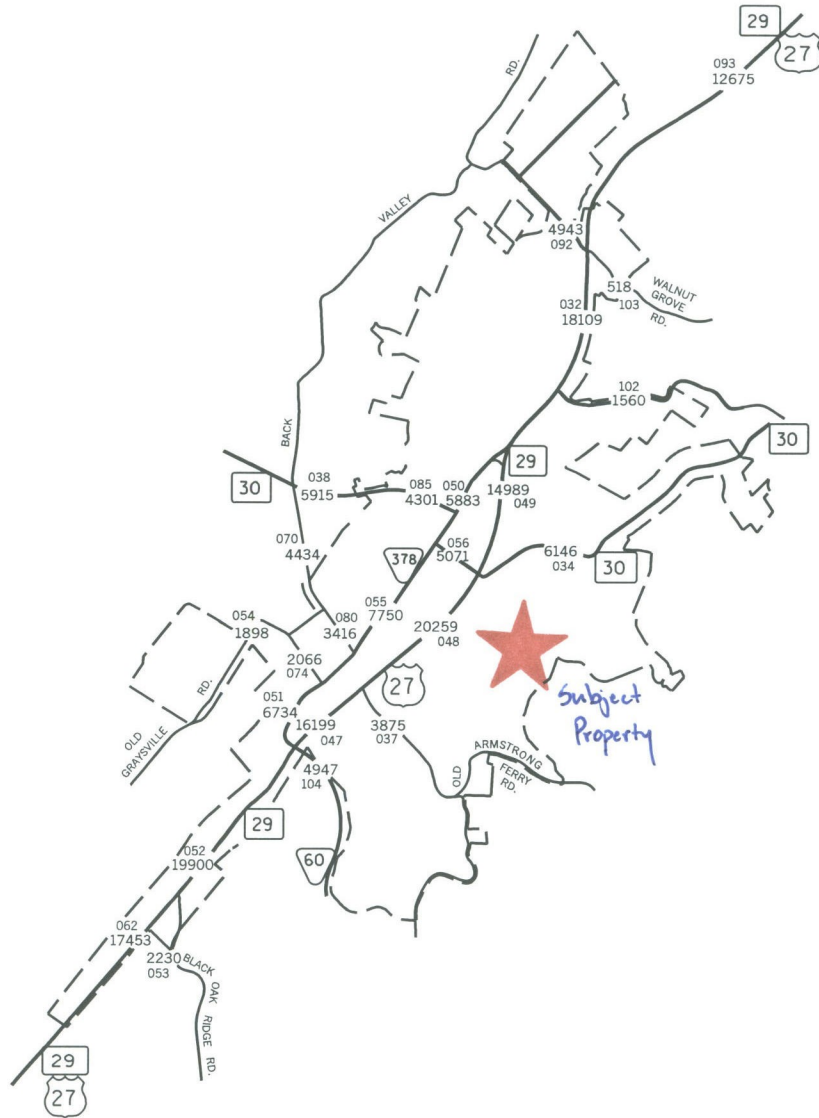
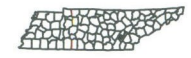


184 Chickamauga Drive



- LEGEND**
- 320 AVERAGE DAILY TRAFFIC VOLUME
  - 45 INTERSTATE HIGHWAY SYSTEM
  - 70 U.S. NUMBERED HIGHWAY SYSTEM
  - 15 STATE SECONDARY HIGHWAY SYSTEM
  - 20 STATE PRIMARY HIGHWAY SYSTEM
  - LOCAL ROAD OR STREET
  - COUNTY LINE
  - STATE LINE
  - INCORPORATED CITY BOUNDARY
  - RESERVATION BOUNDARY
  - WIDE STREAM
  - 000 STATION NUMBER



2008 TRAFFIC MAP  
**DAYTON**  
**TENNESSEE**

PREPARED BY THE  
TENNESSEE DEPARTMENT OF TRANSPORTATION  
LONG RANGE AND PROJECT PLANNING DIVISIONS  
IN COOPERATION WITH THE  
U.S. DEPARTMENT OF TRANSPORTATION  
FEDERAL HIGHWAY ADMINISTRATION

