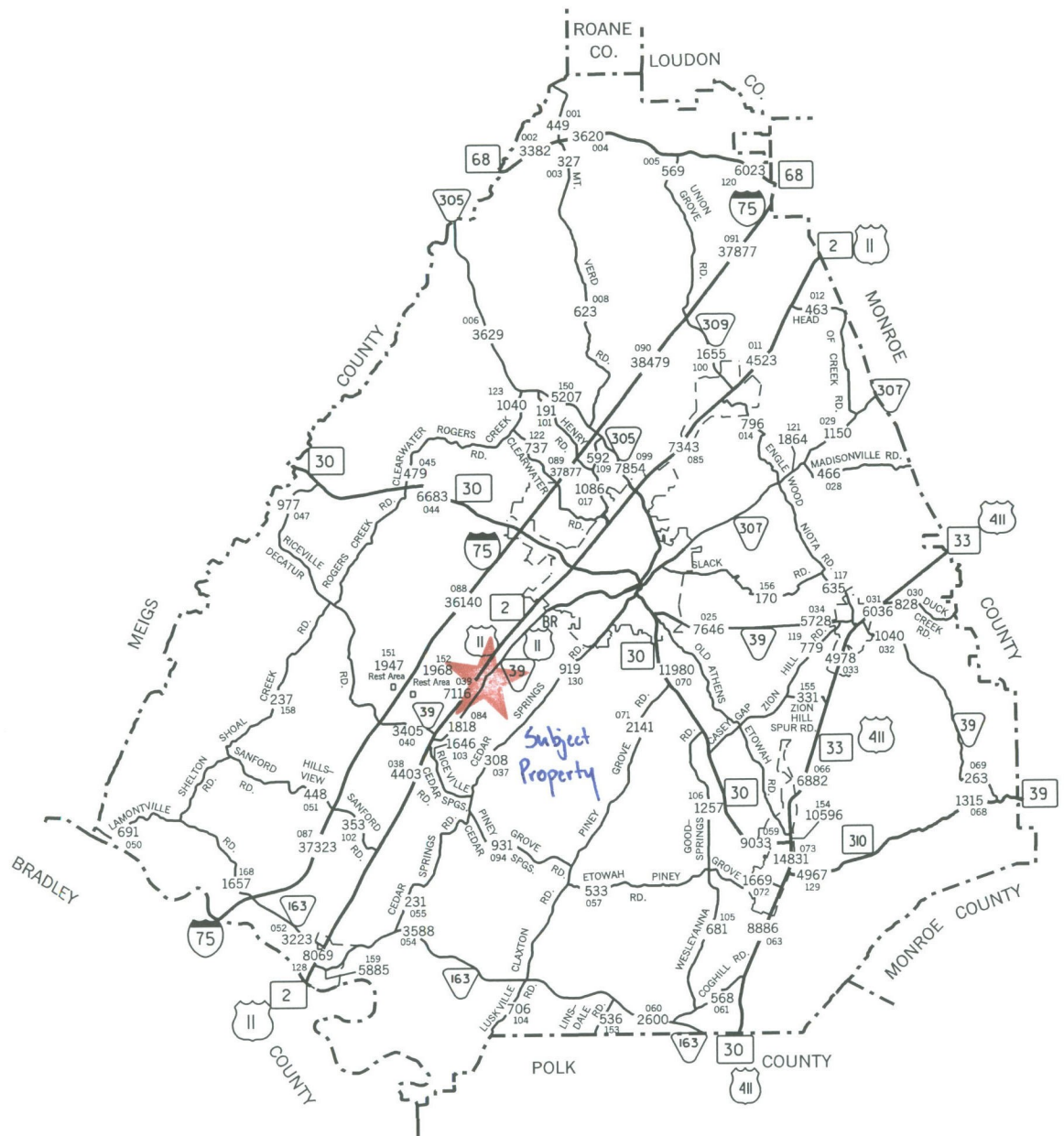


3539 Highway 115

LEGEND

- 320 AVERAGE DAILY TRAFFIC VOLUME
- 40 INTERSTATE HIGHWAY SYSTEM
- 70 U.S. NUMBERED HIGHWAY SYSTEM
- 10 STATE SECONDARY HIGHWAY SYSTEM
- 20 STATE PRIMARY HIGHWAY SYSTEM
- LOCAL ROAD OR STREET
- COUNTY LINE
- STATE LINE
- INCORPORATED CITY BOUNDARY
- RESERVATION BOUNDARY
- WIDE STREAM
- 000 STATION NUMBER



2008 TRAFFIC MAP
MC MINN COUNTY
 TENNESSEE

PREPARED BY THE
 TENNESSEE DEPARTMENT OF TRANSPORTATION
 LONG RANGE AND PROJECT PLANNING DIVISIONS
 IN COOPERATION WITH THE
 U.S. DEPARTMENT OF TRANSPORTATION
 FEDERAL HIGHWAY ADMINISTRATION

